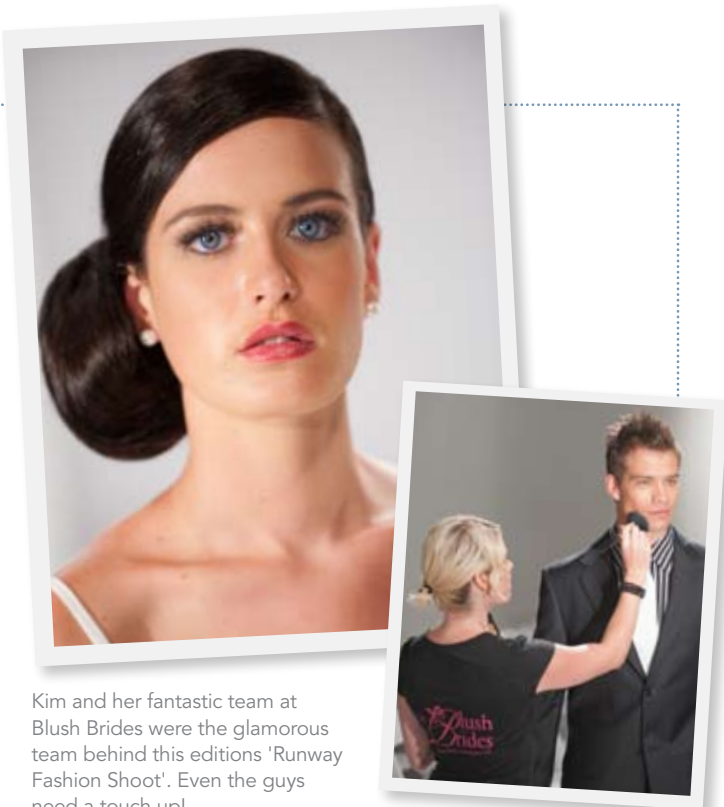


Runway glamour

TIPS FROM WEDDING BEAUTY EXPERTS

BY KIM MCGANN



Kim and her fantastic team at Blush Brides were the glamorous team behind this editions 'Runway Fashion Shoot'. Even the guys need a touch up!

ACHIEVE OUR SULTRY AND SOPHISTICATED RUNWAY LOOK!

- BASE** Minimal Foundation by Napoleon
Camera Finish Foundation by Napoleon
- CHEEKS** Blush Patrol by Napoleon
- EYES** Forged Rose and Gilded ash by MAC
Gorgeous Cosmetics by Forest
- LIPS** Berry's lip liner by Napoleon
Rare Rubies



PRO TIPS

FOR EYES WITH OOMPH – apply some strip lashes as close to your natural lash line as possible, then give a coat of mascara.

GIVE YOURSELF AN EXTRA SEXY POUT by adding a tiny hint of highlighter to the cupid's bow on your top lip.

DEFINE YOUR BROWS by softly applying a brown eyeshadow through the hairs using a small brush – great for filling in any gaps.

ALWAYS LINE YOUR LIPS before applying lipstick/gloss... it will last hours and hours!

THE FIRST STEP TO FLAWLESS MAKEUP that goes the distance, is Primer. Apply before foundation.

Blush Brides strongly recommend all brides have the following beauty treatments during the week prior to the wedding.

PROFESSIONAL EYEBROW WAX

No girl should be without a perfectly groomed set of brows, especially on their wedding day. Professionally styled brows frame your face and can give you an instant lift. It will also help your eye makeup go on smooth and look great.

EYELASH TINT

This is possibly the cheapest and best value for money, simple beauty treatment. Its just like colouring your hair on your head, only on your lashes. Ask your beauty therapist for blue black, which is the darkest, this will really help define your eyes. It's also very handy for your honeymoon too. You'll look great even without mascara on!

NAPOLEON SUMMER LOVERS SELF TANNING MOUSSE

An absolute must to get that healthy glow and a radiant bride. This will also help even out your complexion and hide any tiny flaws. Not to mention help camouflage any old tan marks. It is the most natural, easy to apply tan we have ever seen!

EYELASH EXTENSIONS

One of our favourites for extra OOMPH in the eyes. Some false lashes just applied to the outer edges of your eyes really add definition and give you that 'model' almond eye shape. Your eye makeup will look even more fantastic!



For more beauty tips and advice contact Kim at Blush Brides (pg 170)

